

AUCTION

SATURDAY • JULY 10 • 10 A.M.

429 S. Chautauqua • Council Grove

REAL ESTATE

Sells first at 10:00 AM



**2 Bedroom
1 Bath Home**

Tract 1. An older 2 bedroom 1 bath home on a half city block.

Address: 429 S. Chautauqua

OPEN HOUSE Thursday July 1, 5-7pm

Terms: \$2,500 as earnest money day of auction. Balance at closing.

Tract 2. 1.69 acres across from the house with water and electricity meters.

Address: 000 Chautauqua

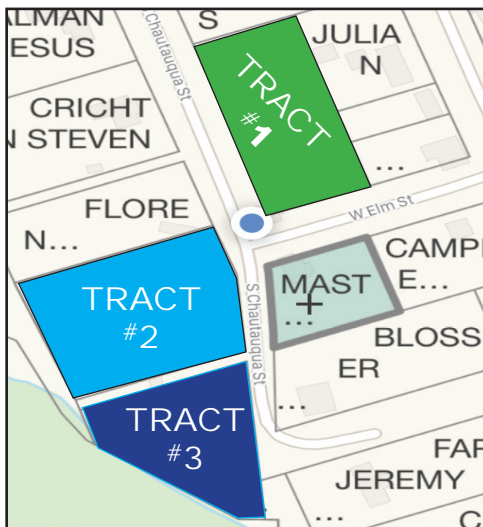
Terms: \$1,000 as earnest money day of auction. Balance at closing.

Tract 3. 1 acre South of Tract 2 with older buildings and borders Elm Creek

Address: 000 McPherson Council Grove

Terms: \$1,000 as earnest money day of auction. Balance at closing.

**Real estate sold without survey
and as is where is.**



**RALPH AND PHYLLIS
ANDERSON ESTATE
SELLER**

PERSONAL PROPERTY SELLS AT 11:00 after the real estate is sold
Will sell the household items first. That will take about an hour.

VEHICLES

1984 Chevrolet 30 Silverado Dually single cab pickup, V8 454 app. 50,000 miles on motor, Binkley 5th wheel pin
2001 Buick Century 4 door car

HORSE EQUIPMENT

Set 2 horse harness, hasn't been used in about 4 years
Leather fly nets
Lots of harness parts, collars, hames, single and double trees, muzzles, driving bits, Western saddle
Wooden tongues, yokes,
Sleigh bells
Farrier tools
Steel axle and wide frame and wide wheels of a circus wagon
Osgood tongueless 1 bottom plow
Deere 1 bottom 16" Sulky plow
IH wooden box manure spreader, needs new wood
2 row stalk cutter
1 row disc cultivator
IH Big 6 mower
Corn roller
2 bottom 12" plow
McCormick Deering 1 row cultivator
Steerable cultivator with stirrups
2 row IH Lister
End gate seeder
3 box wagon seats
Left Hand corn low profile binder-rough
Binder parts
Single gang 7' disc
IH Belt drive burr mill and cement mixer
JD 3 horse tongue/evener
Offset hitch for 3 horse
4 dirt slips
1 row riding lister
2 walking plows
5 shovel cultivator
1 row curler
Kafir header
Endless belts
20 year collection of Draft horse Journals and Small Farm journals,

TOOLS AND SHOP EQUIPMENT

Lincoln AC 225 welder
NAPA 85-125 battery charger
Toro Blower/vac
CP 21 gallon 2.5 hp air comp
Angle grinder
Braces and bits
Lots of drill bits
1/2" drill
DR 6.75 Walk behind string trimmer
Yard Pro Tiller
Poulan Pro 330 chain saw, 24" bar
Jacks
Garden planter with plates
Chains and boomers
Hand and handled tools
Ladders

FARM EQUIPMENT

'37 AC WC Parts tractor, fenders, spoke wheels
BMB older trail type rotary mower
2 Case iron wheel side delivery rakes
AC snap coupler 6' blade
Buzz saw
IH 1100 gear box, sections, guards, parts, etc.
14' and 16' hay wagons

COLLECTIBLES

Warm Morning round coal burning heating stove, NEW
Worlds Standard cream separator
Cast dinner bell
Milk cans
2 cast iron shingle cutters
Iron wheels
Tin seats
Log tongs
Glass chicken waterers
Smith Eq-CG JD rain gauge
Blocks
Snatch block
pulleys
riveter
Cast tool box
Western hats
Oak wall telephone
Post drill 1 and 2 man saws, saw sets
Post vise
Cattle xing signs and other street signs
14" hand post hole auger

HOUSEHOLD (sells at 11:00)

Bell Collection
Church collection
Curio cabinets
Lift chair
Recliner
Trundle day bed
Bedroom set
Newer oval dining table, 3 leaves & 4 chairs
Dinette table
Microwave
Refrigerator and electric range
Older washer and dryer
Bedroom sets
Texport cast kettle/lid
Kitchen essentials
Canning jars
Pressure cooker

OTHER

Tires and wheels
Firewood
Axle with 6 bolt wheels
50 +/-T posts and puller
9 Wire combination panels
Gates
Goat houses
59 Chev pickup bed trailer, short wide bed and front axle
1 ton Ford truck frame/rear end
SCRAP IRON, starters and generators
MUCH MORE

Personal Property Terms:

Cash or approved check day of Auction.
Major Credit Cards with a 4% Transaction fee.

Inspection day of auction. Remove all items day of auction.

Some photo's at: www.hancockauctionandrealstate.com

Paul Hancock, Jase Hubert Auctioneers

PAUL HANCOCK

Broker and Auctioneer

Emporia, KS 66801

620-340-5692

www.hancockauctionandrealstate.com

HANCOCK AUCTION & REAL ESTATE

Auctions - Selling Kansas Land Since 1977 - Appraisals